

Phase B - Start-up meeting

Selection of corridors

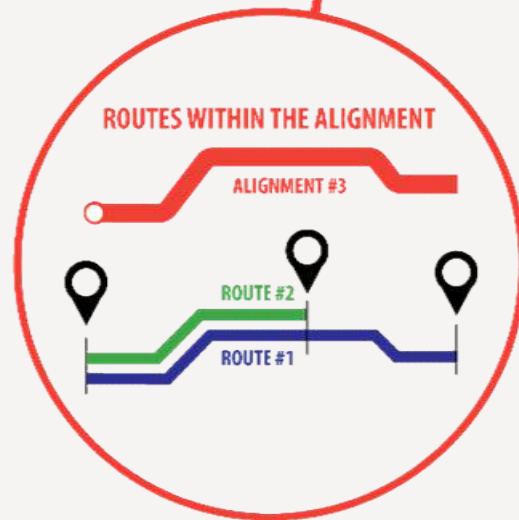


1

FEBRUARY 2017
SELECTION OF CORRIDORS

COWI

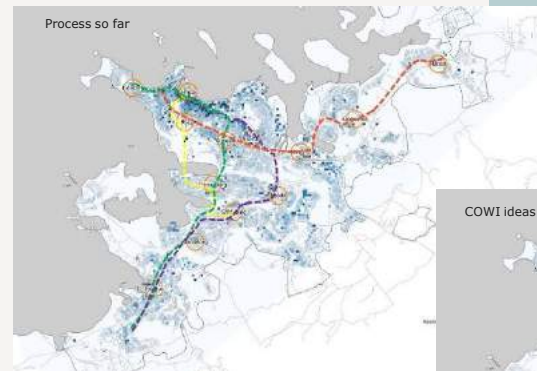
POSSIBLE ALIGNMENTS WITHIN A CORRIDOR



Selection of corridors

Possible corridors

- > Process so far
- > Workshop input
- > COWI ideas



Output from face A - corridors

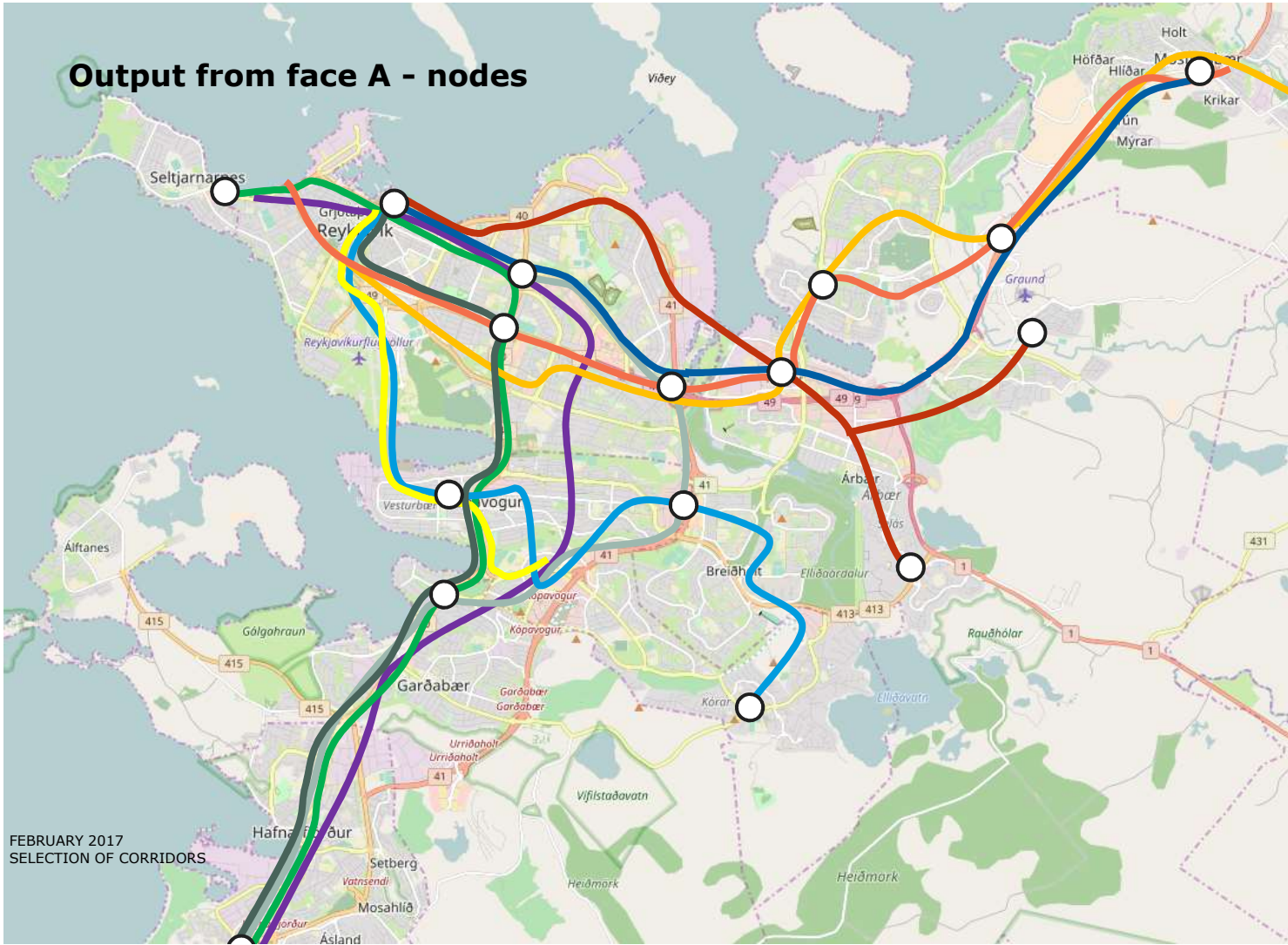


4

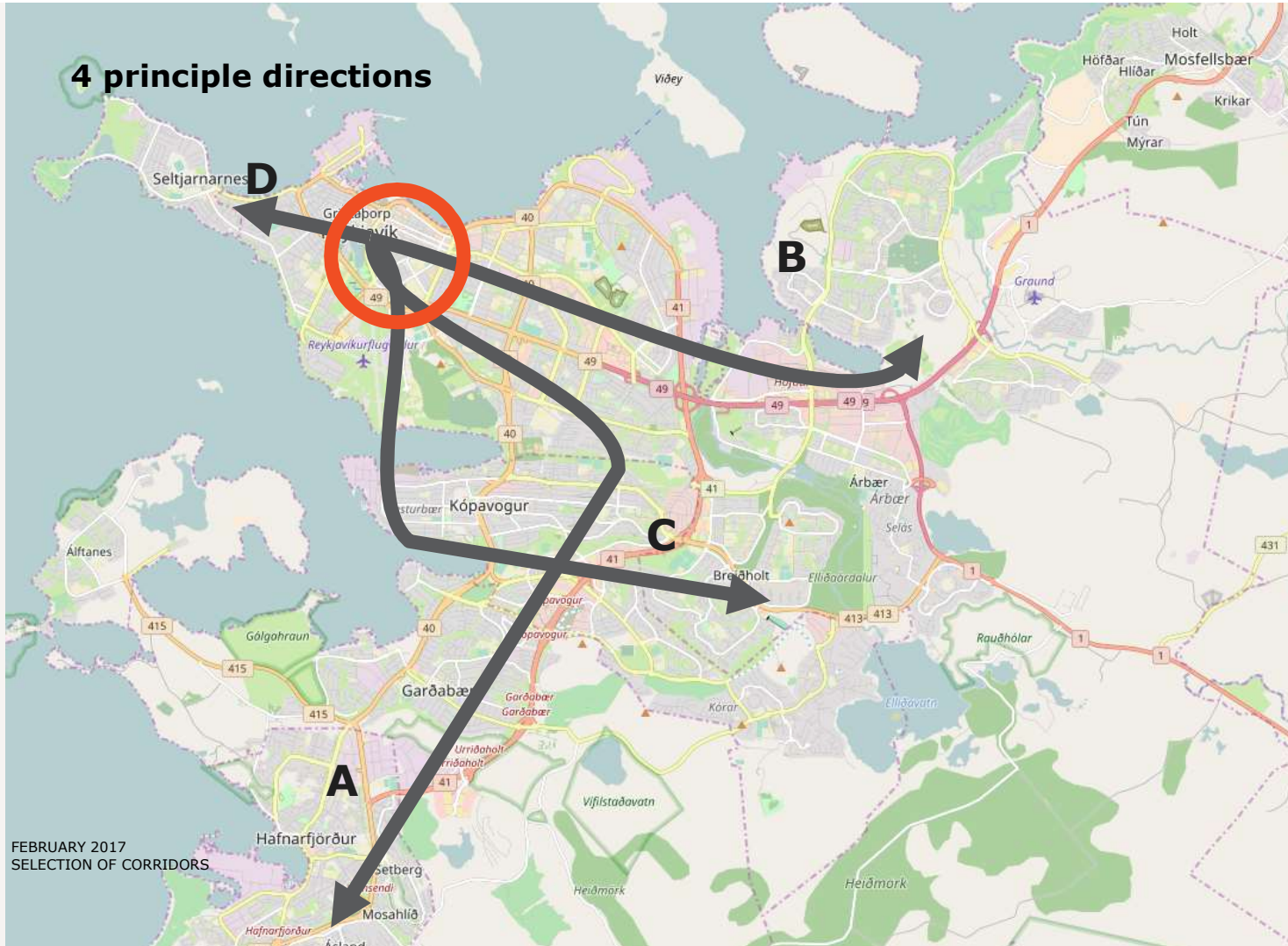
FEBRUARY 2017
SELECTION OF CORRIDORS

COWI

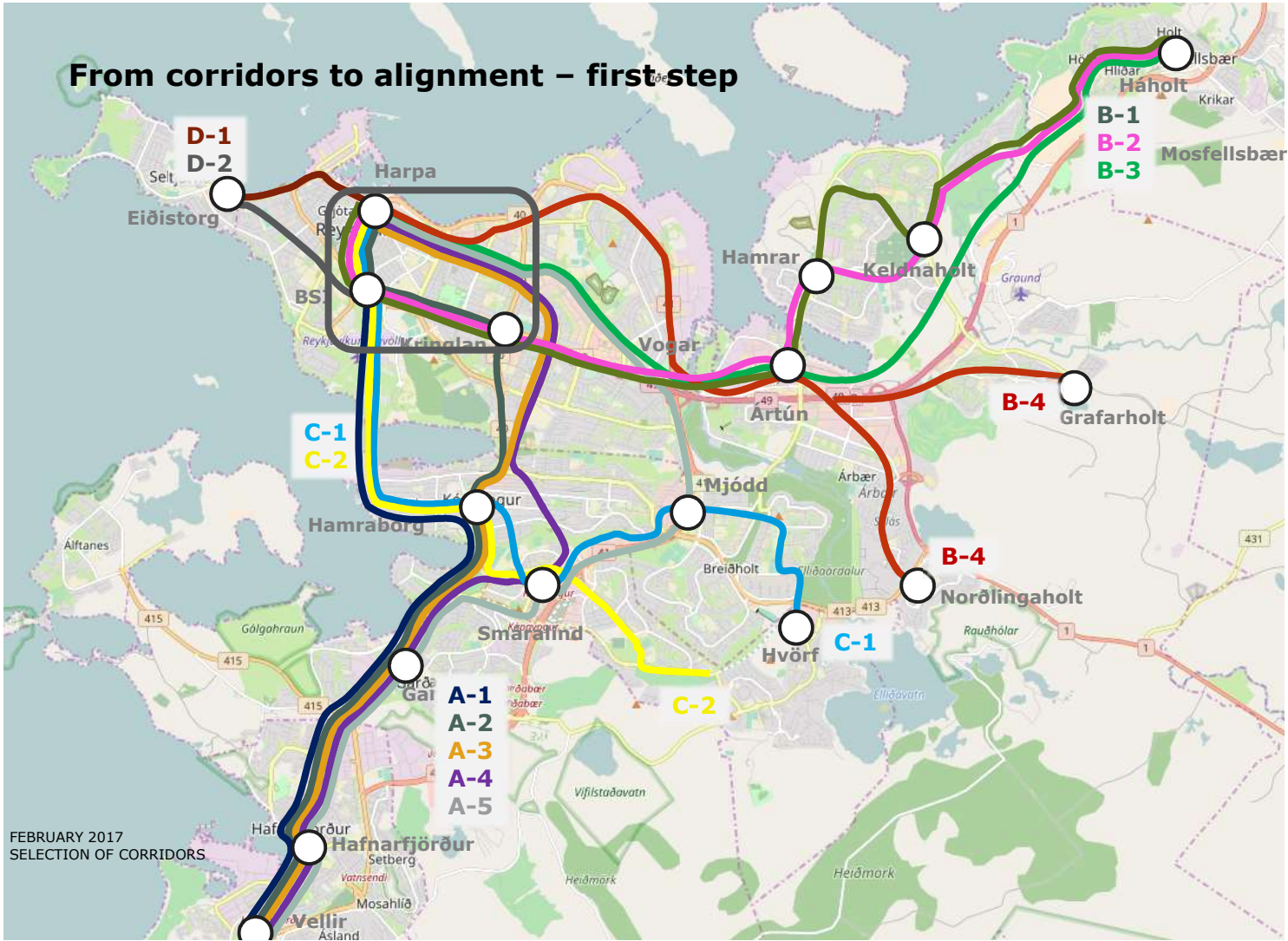
Output from face A - nodes



4 principle directions



From corridors to alignment – first step



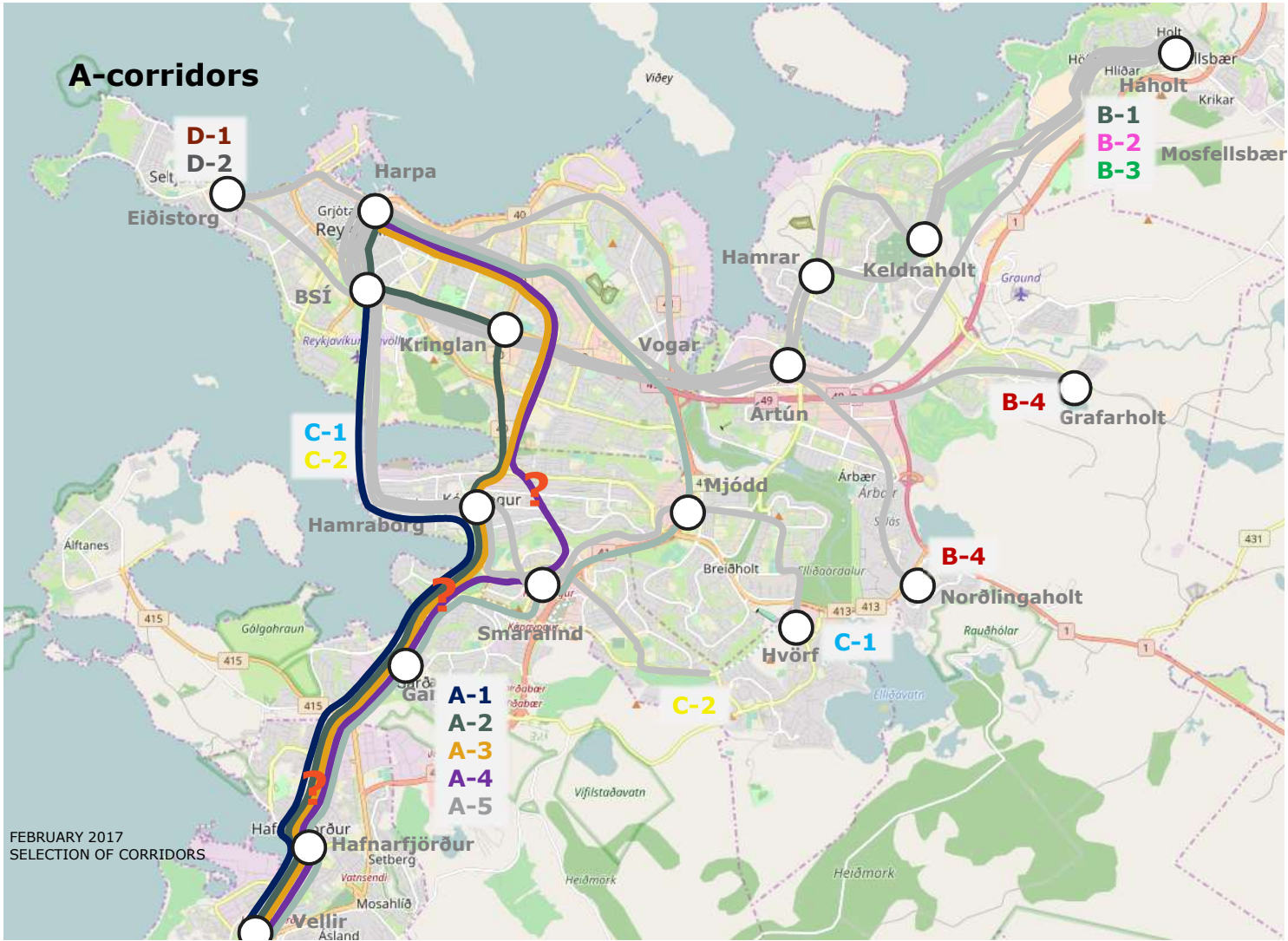


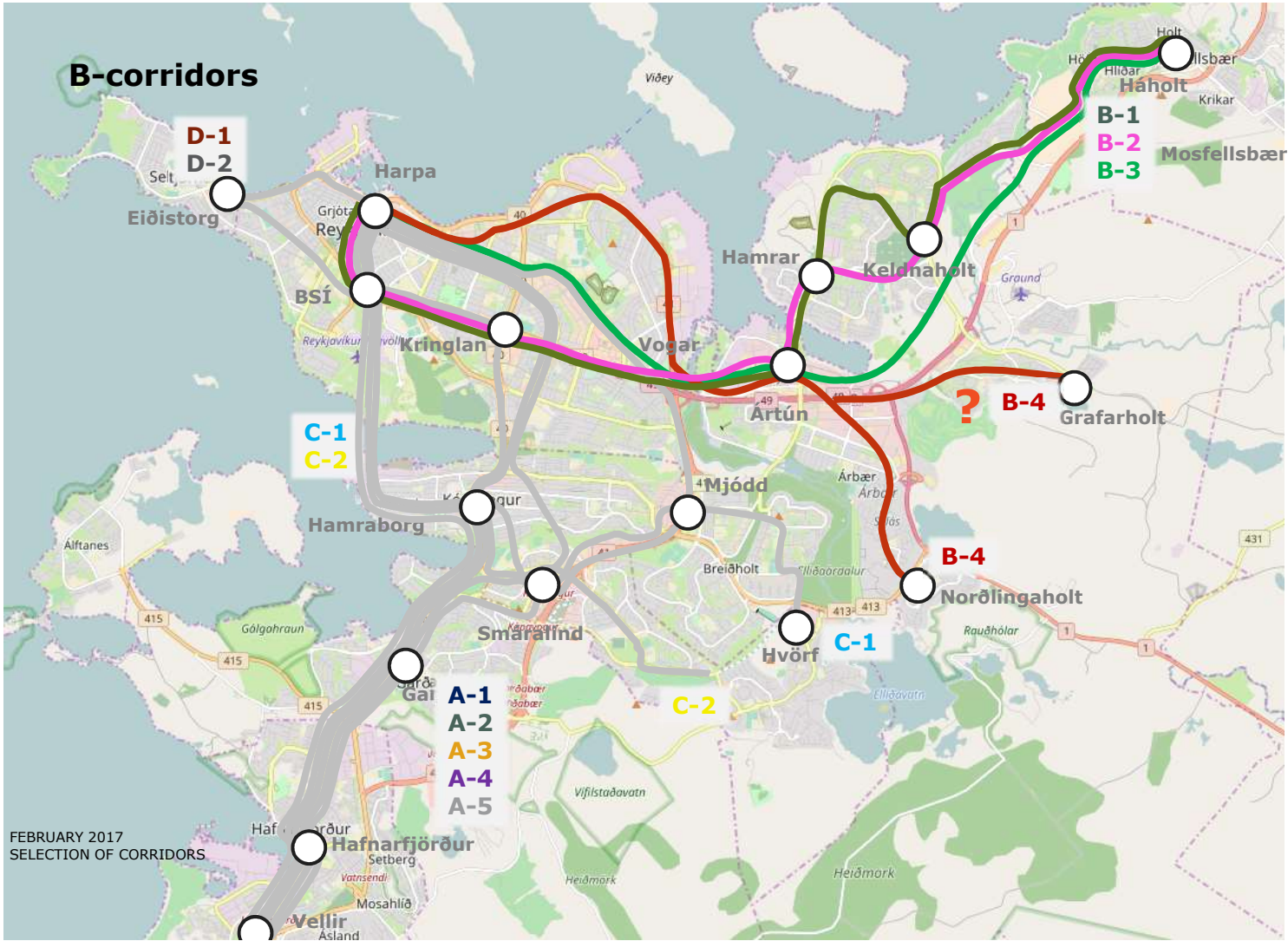
From corridors to alignment

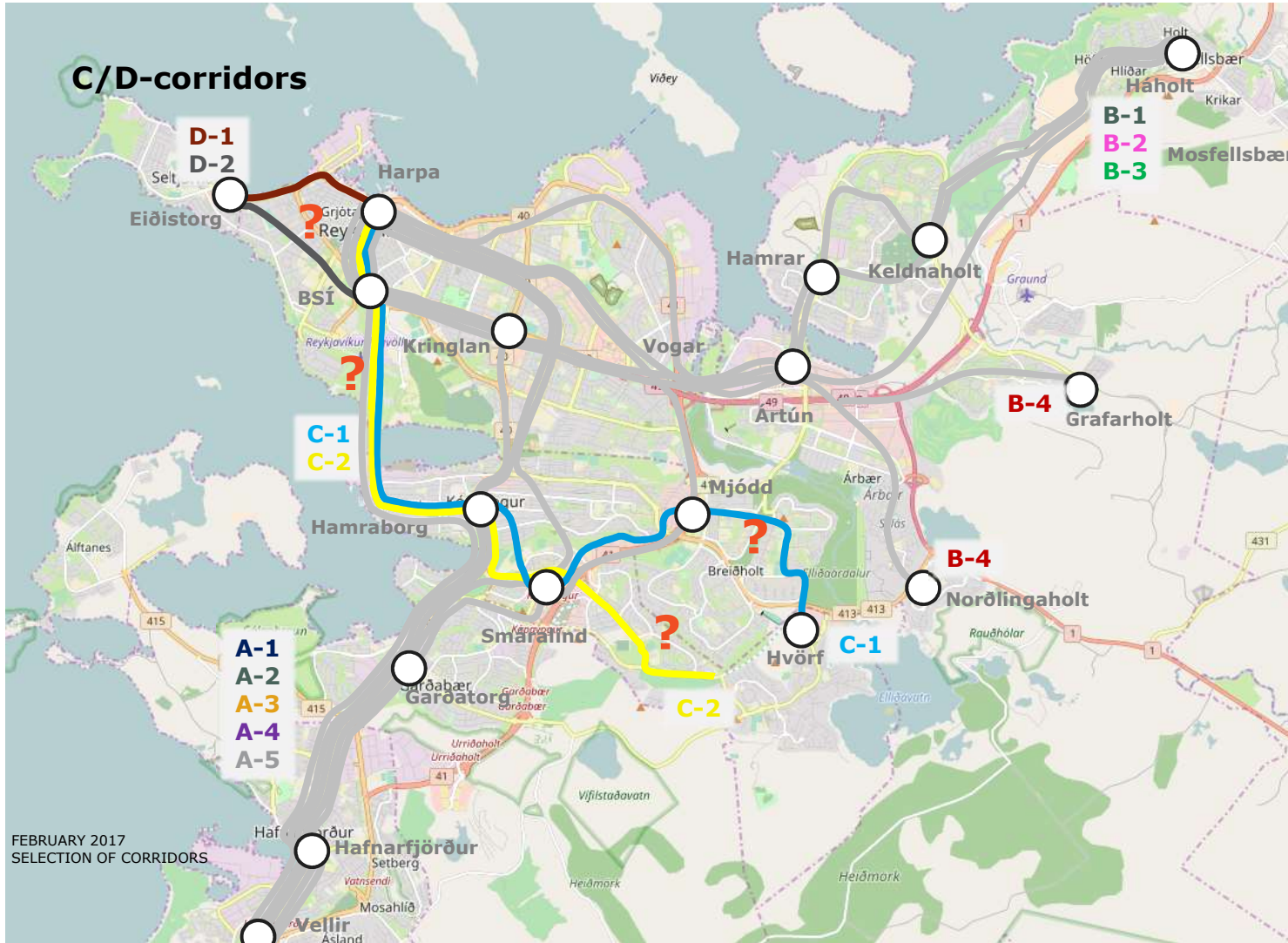
- ensuring buildable options

A range of questions appear...

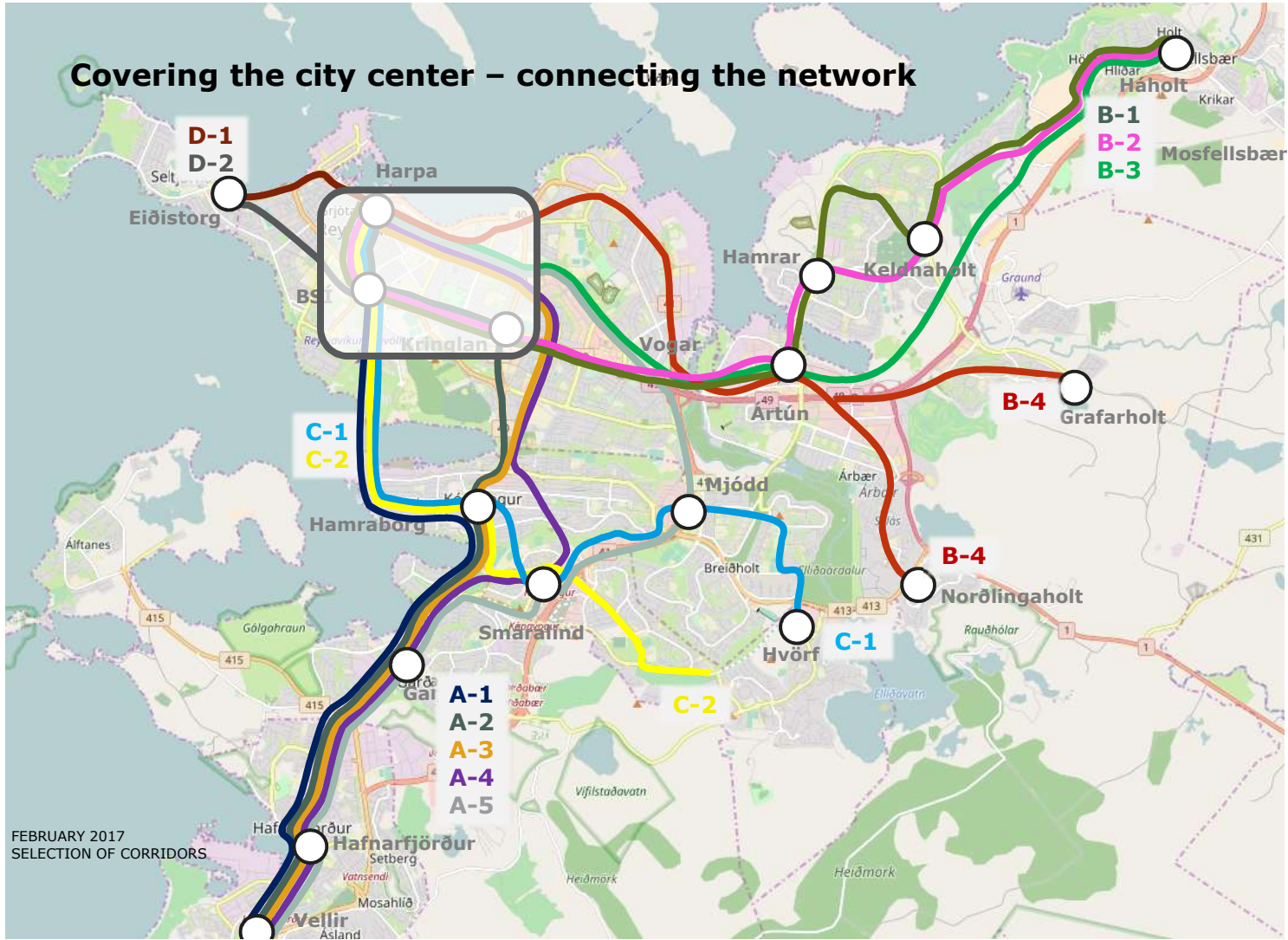
- > How radical changes are you prepared for?
 - > Expropriation of houses?
 - > Car capacity?
- > How isolated does the system need to be?
 - > All separate lanes or only targeted at congestion?
- > Should the system allow for light rail
- > ...







Covering the city center – connecting the network

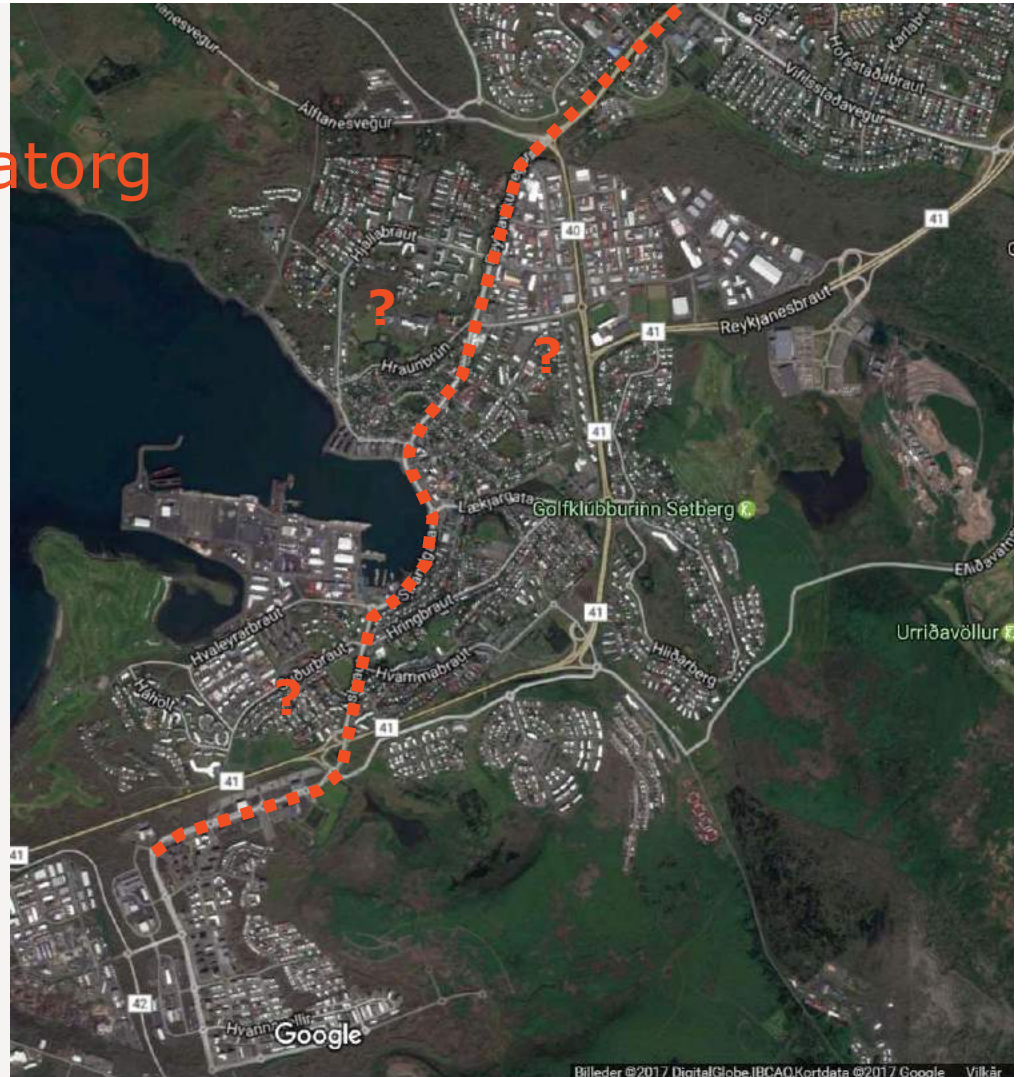


Covering the city center

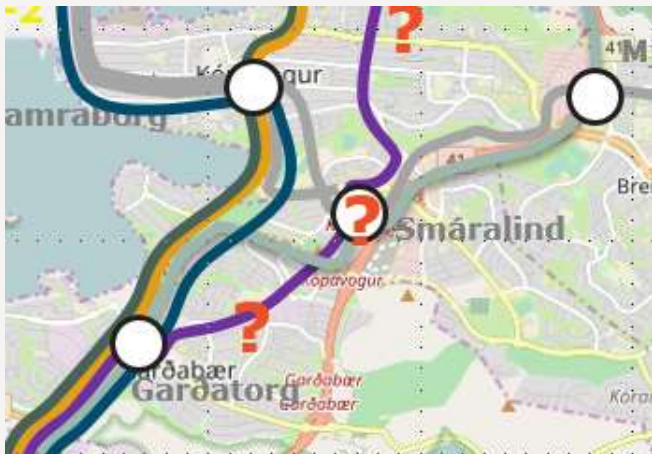


Detailed maps

Vellir-Hafnarfjörður-Garðatorg



Garðatorg-Smáralind



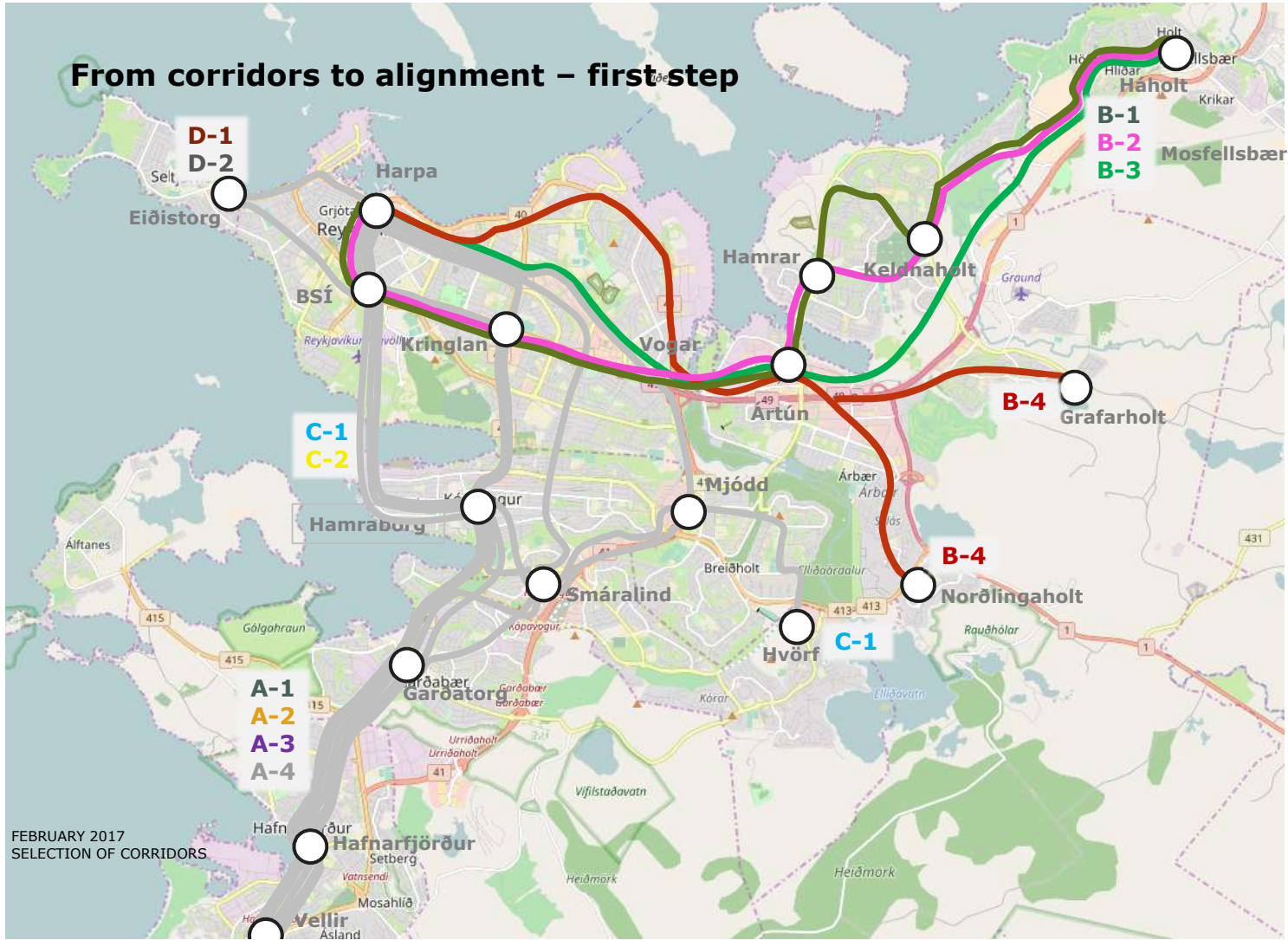
Smáralind-Kringlan



Kringlan-Harpa



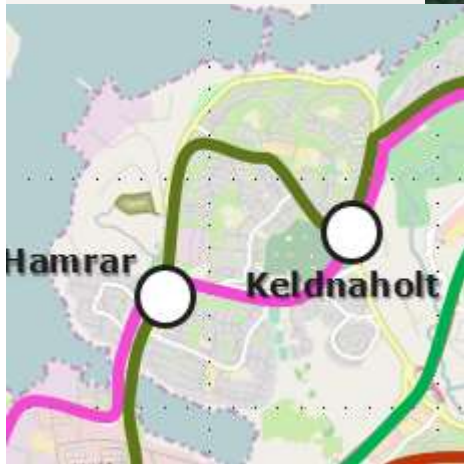
From corridors to alignment – first step



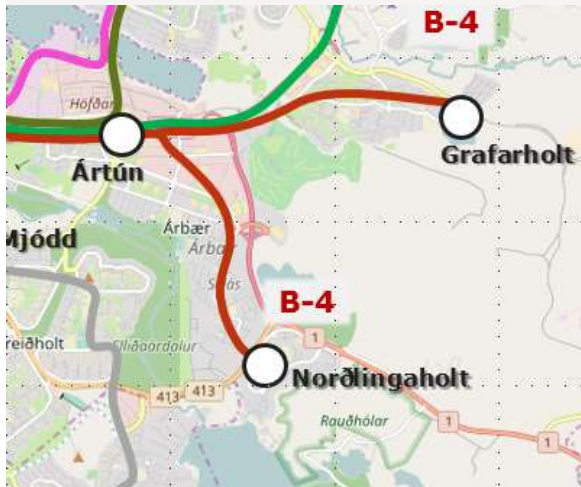
Háholt / Mosfellsbær



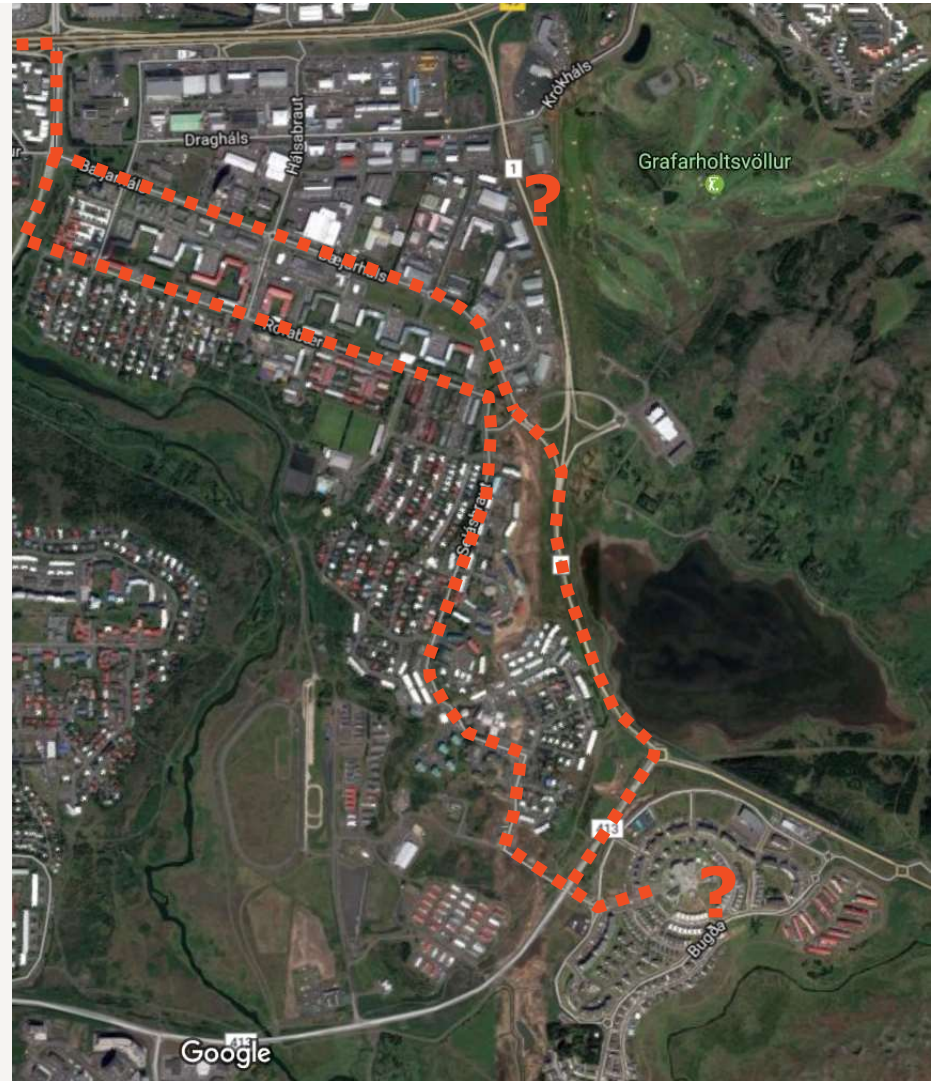
Keldnaholt



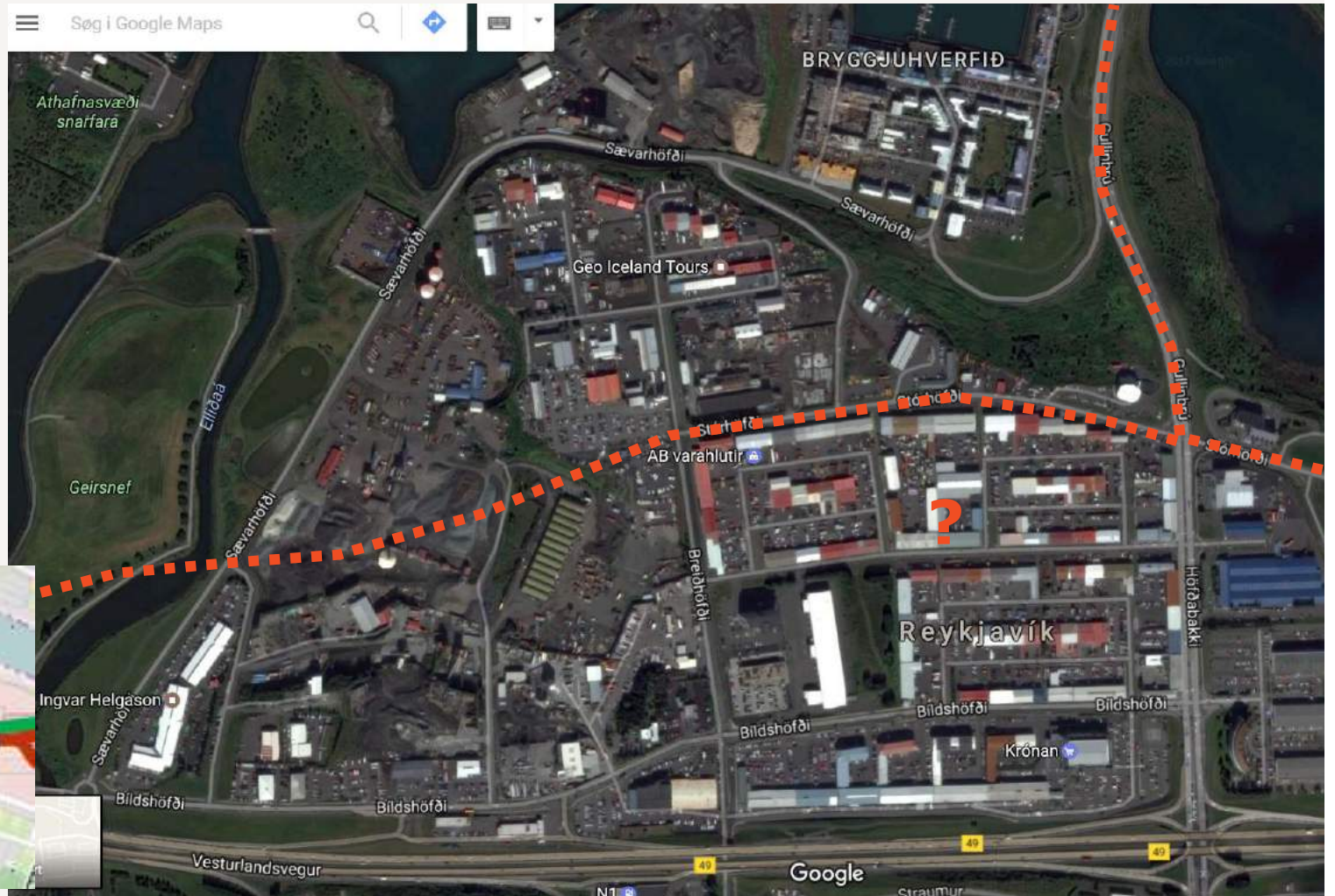
Grafarholt



Norðlingaholt



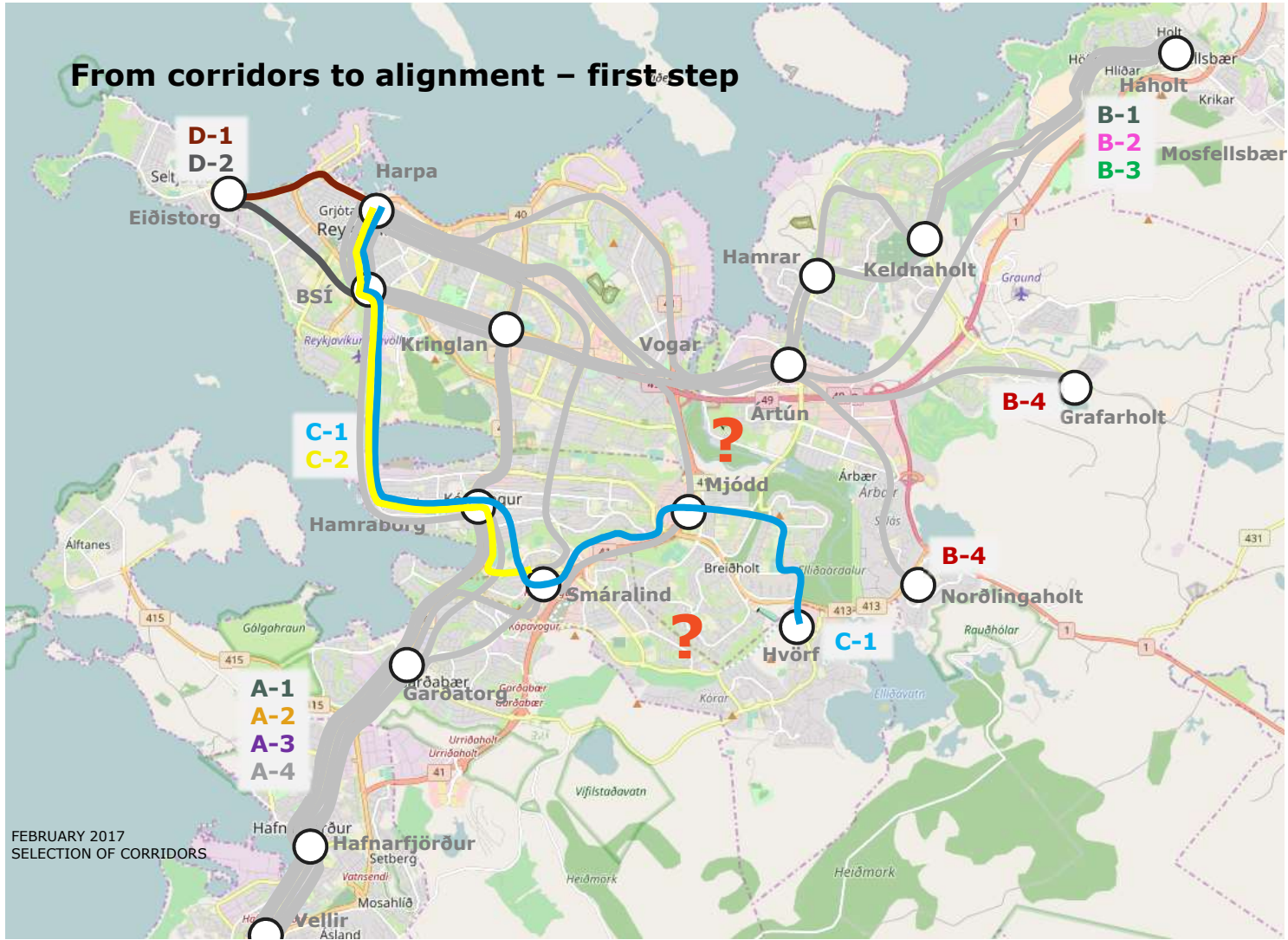
Ártún



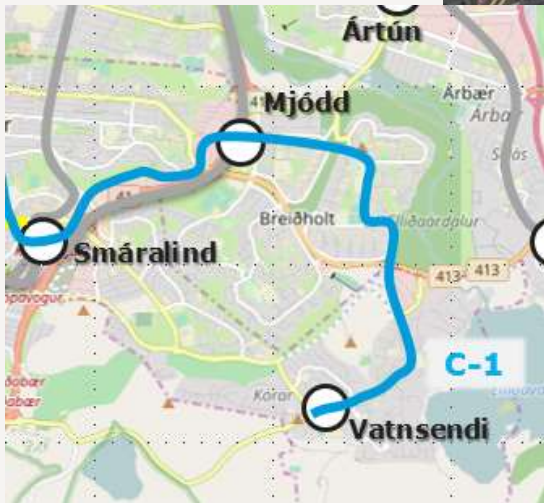
Vogar-Harpa



From corridors to alignment – first step



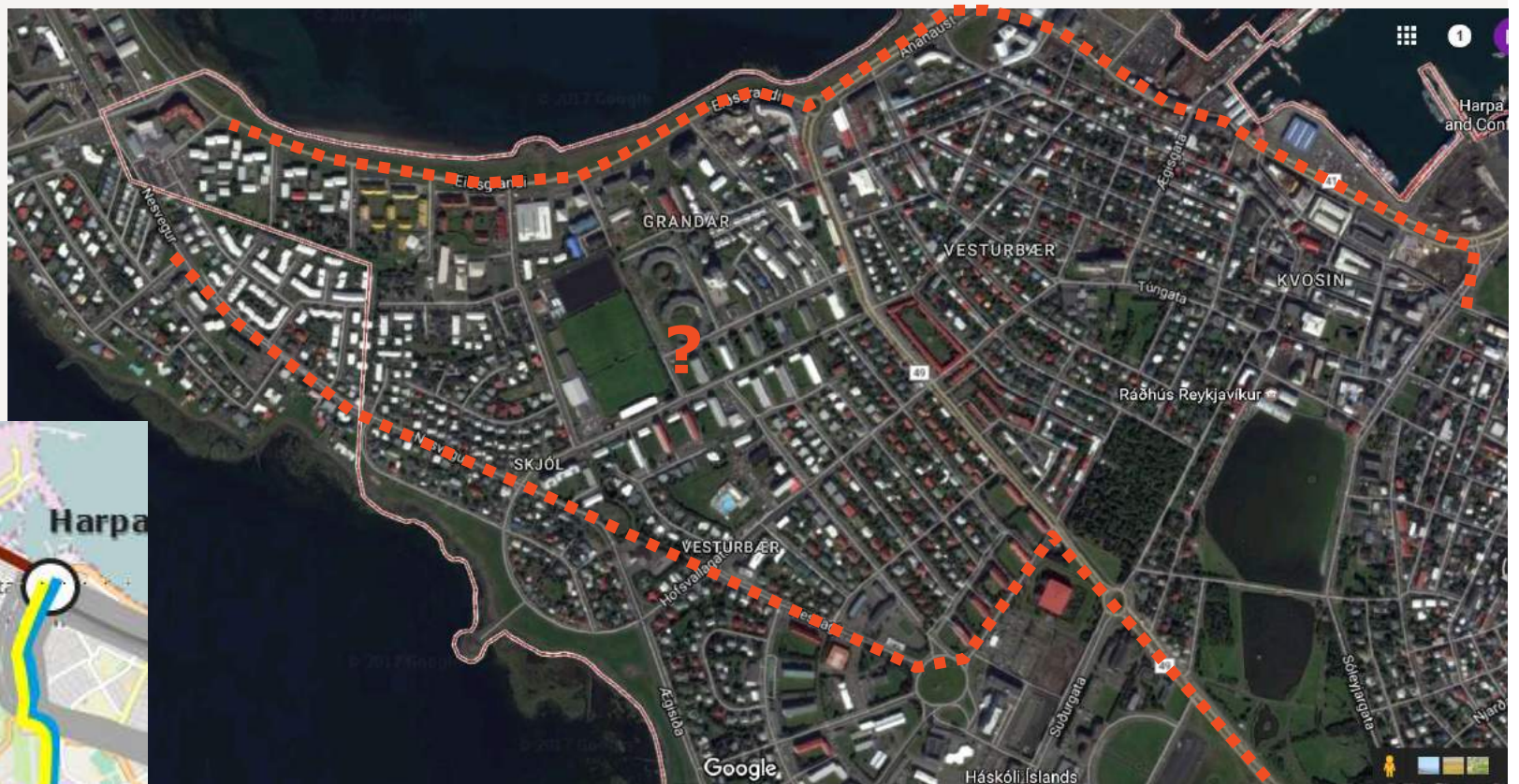
Vatnsendi-Mjódd-Smáralind



Smáralind-Hamraborg



Harpa – Eiðistorg



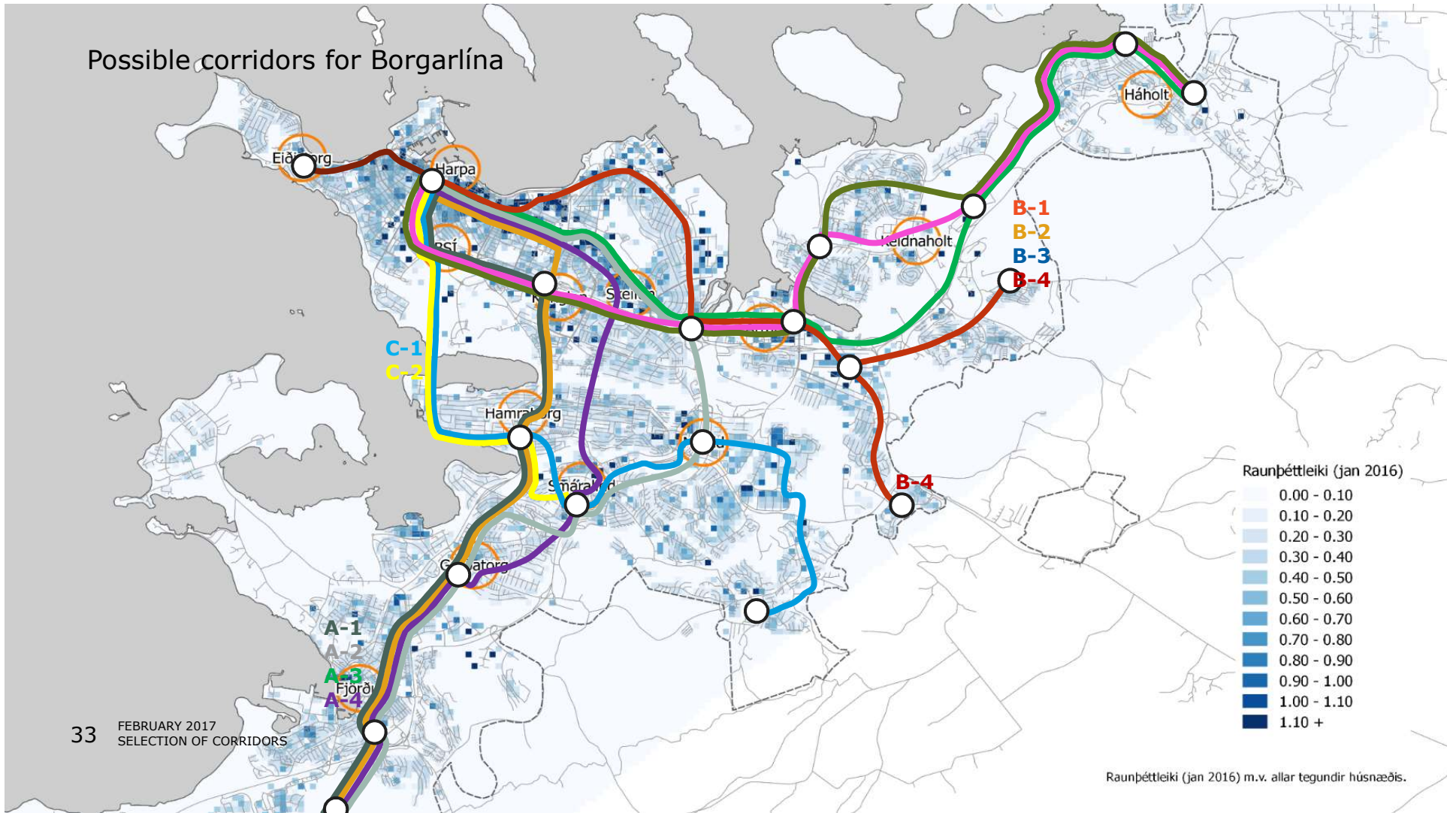
Selection of corridors

Corridor names

Corridor	Sections
A-1 (dark grey)	Harpa – BSÍ – Kringlan – Hamraborg – Garðatorg – Hafnarfjörður – Vellir
A-2 (orange)	Harpa – Hlemmur – Kringlan – Hamraborg – Garðatorg – Hafnarfjörður – Vellir
A-3 (purple)	Harpa – Hlemmur – Skeifan – Vogar – Smáralind – Garðatorg – Hafnarfjörður – Vellir
A-4 (light grey)	Harpa – Hlemmur – Skeifan – Vogar – Mjódd – Smáralind – Garðatorg – Hafnarfjörður – Vellir
B-1 (army green)	Harpa – BSÍ – Kringlan – Vogar – Ártún – Keldnaholt – Háholt / Mosfellsbær
B-2 (pink)	Harpa – BSÍ – Kringlan – Vogar – Ártún – Foldir – Háholt / Mosfellsbær
B-3 (green)	Harpa – Hlemmur – Skeifan – Vogar – Ártún – Víkurvegur – Háholt
B-4 (red)	Harpa – Hlemmur – Laugarás – Ártun – Árbær - Norðlingaholt/Grafarholt
C-1 (blue)	Harpa – University – Midborg (city airport) – Hamraborg – Smáralind – Mjódd – Fell – Vatnsendi
C-2 (yellow)	Harpa – University – Midborg (city airport) – Hamraborg – Smáralind
D-1 (dark red)	Harpa – Eiðistorg

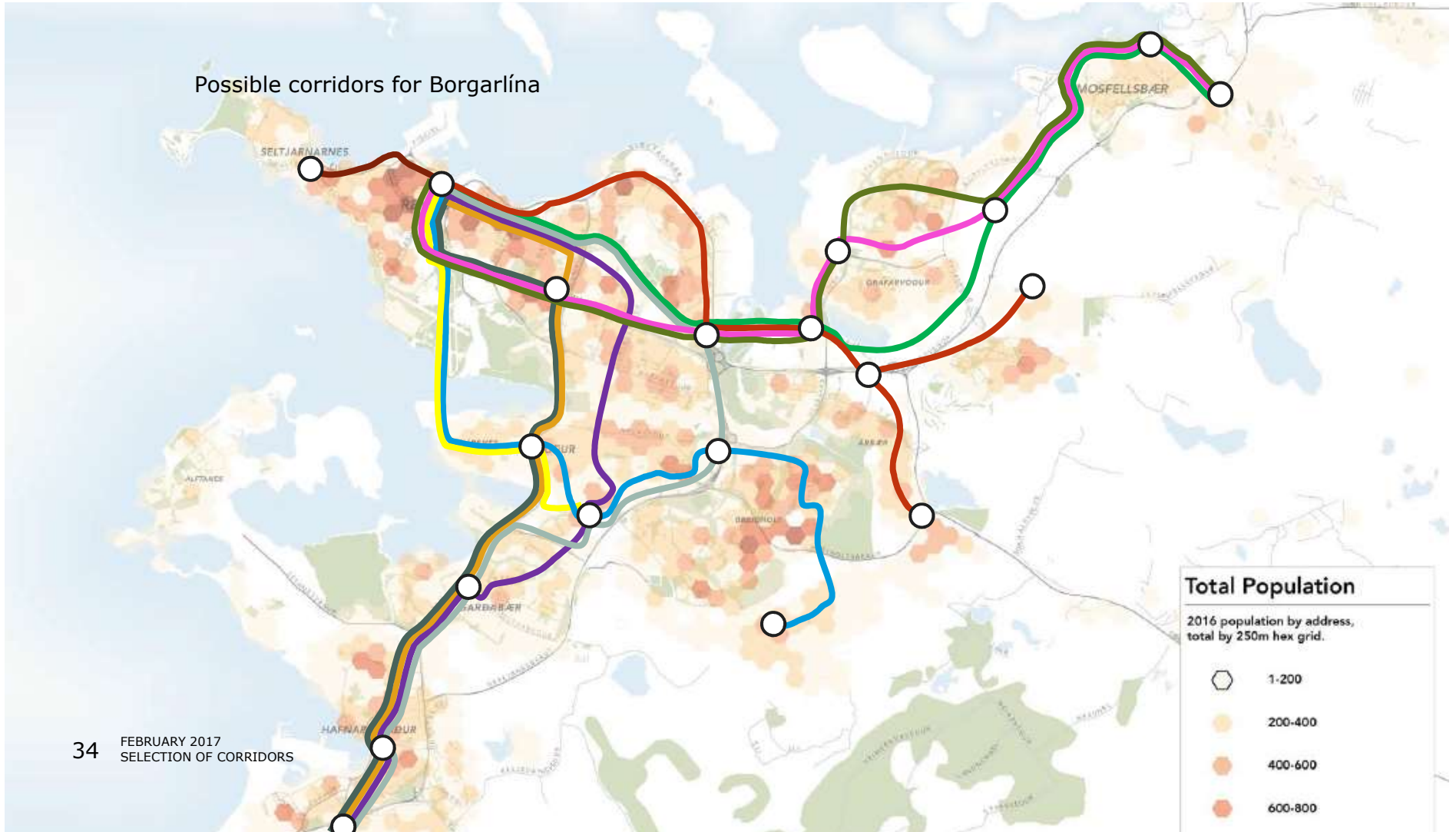
Coverage

Possible corridors for Borgarlína

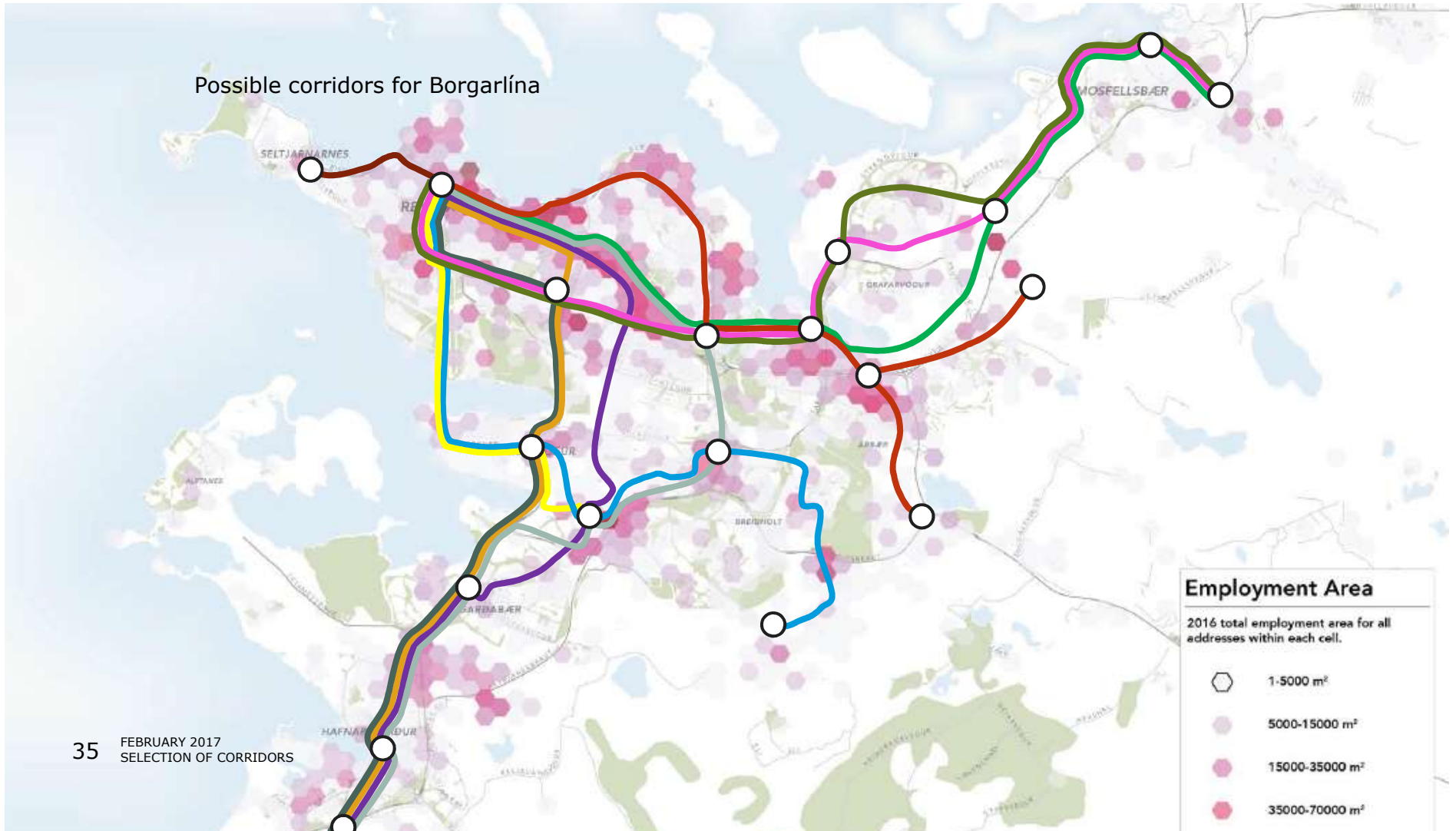


Raunþétteleiki (jan 2016) m.v. allar tegundir húsnæðis.

Possible corridors for Borgarlína

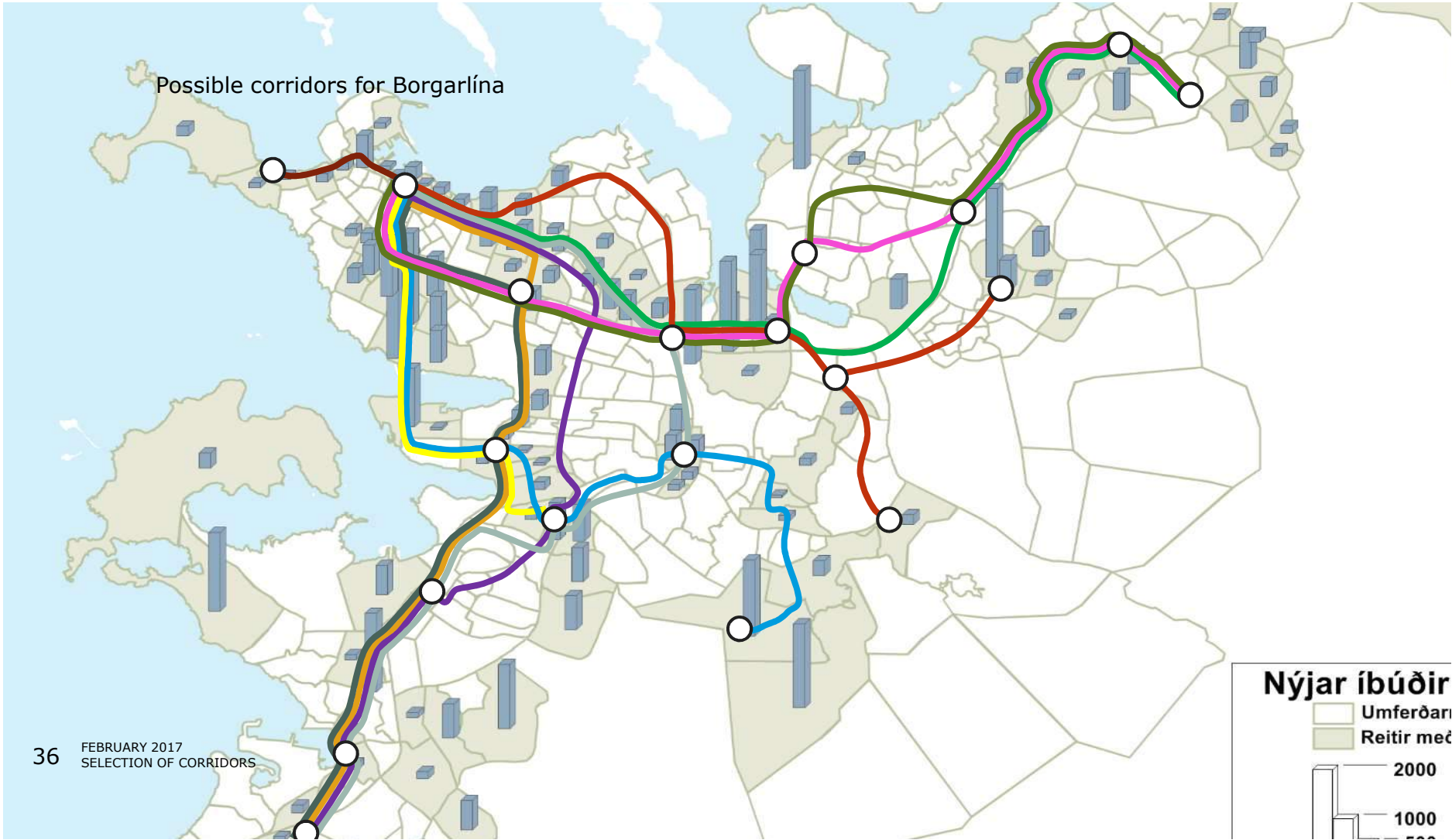


Possible corridors for Borgarlína



Employment Area	
2016 total employment area for all addresses within each cell.	
⬡	1-5000 m ²
⬡	5000-15000 m ²
⬡	15000-35000 m ²
⬡	35000-70000 m ²

Possible corridors for Borgarlína



Possible corridors for Borgarlína

